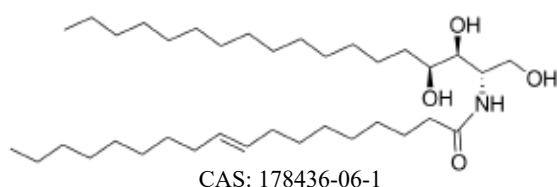


Anallerg® -- Ceramide NP

INCI: Ceramide NP

Product Description

Anallerg®-- Ceramide NP is a lipid substance with a similar material structure to the stratum corneum of the skin. It helps renew the skin's natural protective layer and maintain the skin's moisture balance.



Appearance	White to off-white powder
Odor	Characteristic odor
Purity(HPLC, %)	≥95%
Solubility	Poor water solubility suggests the use of encapsulated liposomes
Dosage	0.05-0.5%

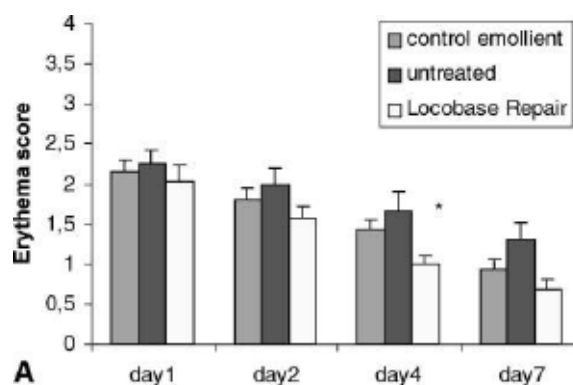
★ Can provide other specifications (customized).

Anallerg® -- Ceramide NP-6P

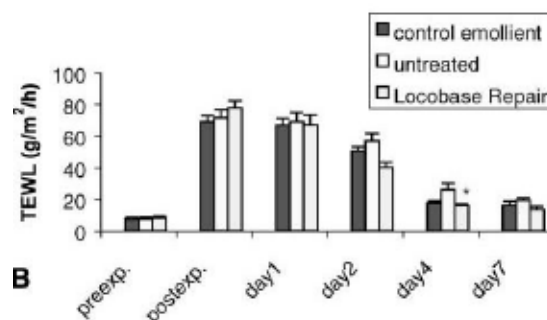
INCI	Ceramide NP(6%), Glycerin, Octyldodecanol, Hydrogenated lecithin, Cholesterol, Water
Solubility	Water-soluble

Efficacy Verification

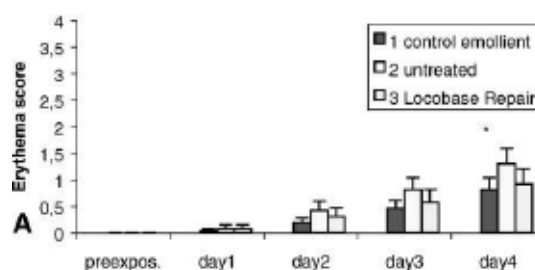
- Ceramide NP can repair the skin barrier and reduce skin sensitivity and irritation.
- ▲ Controlemollient: medical white petrolatum;
- ▲ Untreated: placebo;
- ▲ LocobaseRepair: contains ceramide III emollient;



Ceramide NP can significantly reduce skin erythema caused by adhesive tape peeling



Ceramide NP can significantly inhibit transepidermal water loss after adhesive tape stripping



Ceramide NP can significantly reduce skin erythema caused by surfactant SDS