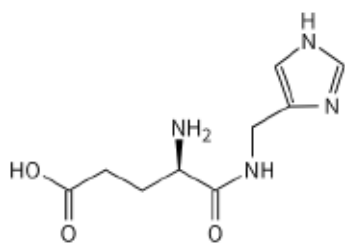


# Anallerg<sup>®</sup> - Synyouth<sup>®</sup>

INCI: Glutamylamidoethyl Imidazole

## Product Description

**Anallerg<sup>®</sup>-Synyouth** is a biorhythm regulator and anti-sugar agent. It has the effects of nourishing, repairing, soothing, moisturizing, anti-wrinkle and firming.



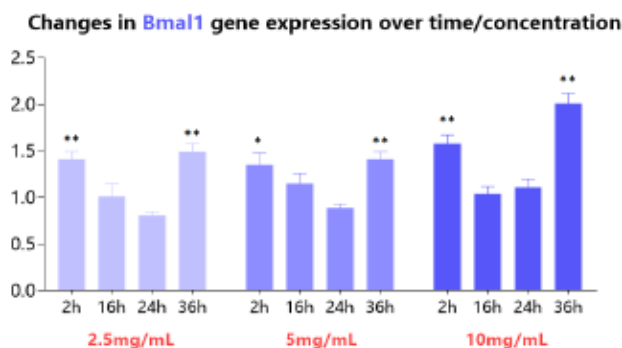
CAS:169283-81-2

Appearance	White to off-white powder
Odor	Characteristic odor
Purity(HPLC, %)	≥98%
Solubility	Water-soluble
Dosage	0.005-0.1%

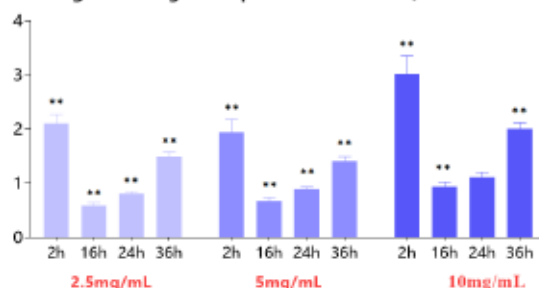
★ Can provide other specifications (customized).

## Efficacy Verification

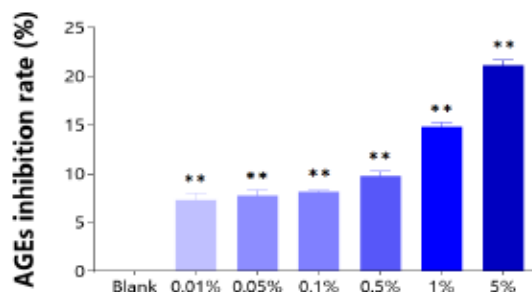
- Clock genes expression:



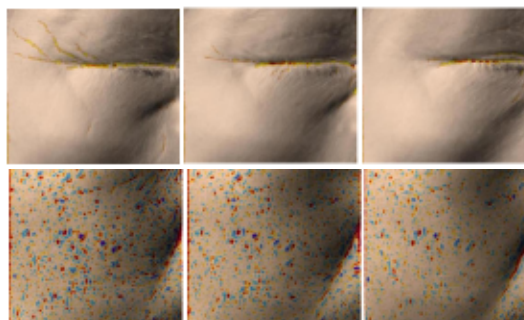
Changes in **Per** gene expression over time/concentration



- Inhibits AGEs:



- Clinical trial: 30 candidates staying up late used 0.2% Synyouth<sup>®</sup> serum for 2 to 4 weeks



## Anallerg<sup>®</sup> -- Synyouth<sup>®</sup>-1C

INCI	Glutamylamidoethyl imidazole (1%) , Butylene Glycol, Water
Solubility	Water-soluble